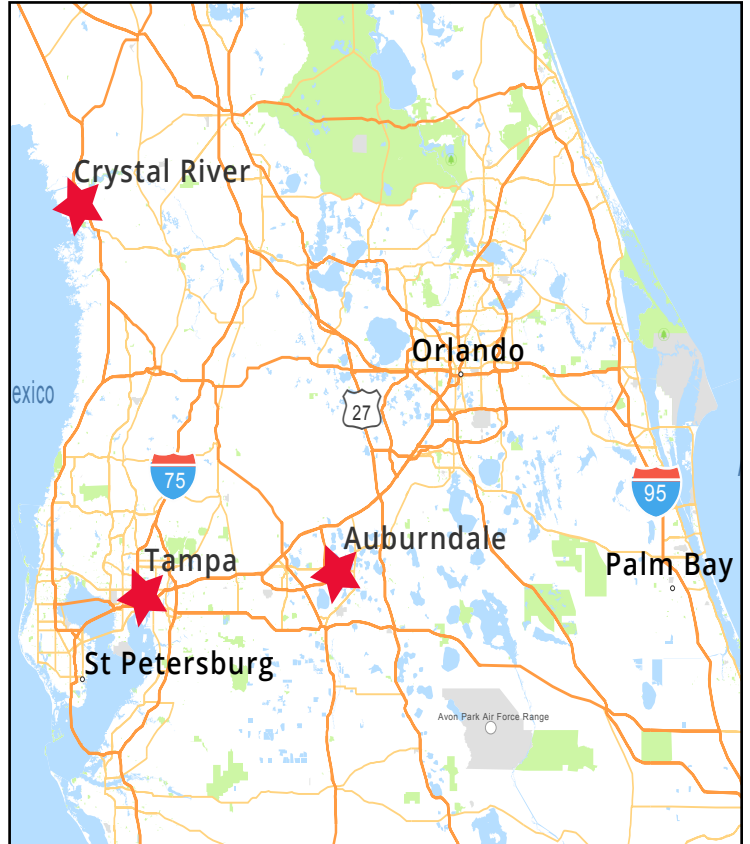
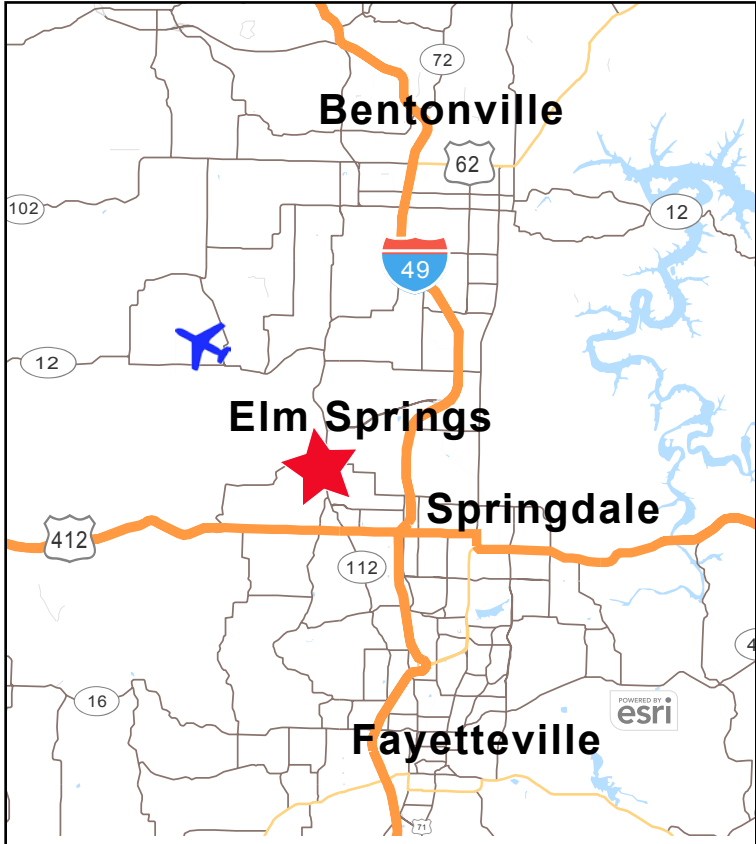


Burr & Temkin

AUCTION - 4 Truckload Properties

FOR SALE

Final Call for Offers Due October 8, 2020



	LOCATION	SHOP	TOTAL SF	ACRES
ARKANASAS	Elm Springs	15 Bays	39,200	15
FLORIDA	Auburndale	19 Bays	92,300	20.1
	Crystal River	2 Bays	5,600	15.1
	Tampa	8 Bays	14,280	11.4

Will McFarlin
12395 Morris Road
Suite 105
Alpharetta, GA 30005
770.410.1900
willm@burrtemkin.com

Nathaniel Weikert
12395 Morris Road
Suite 105
Alpharetta, GA 30005
678.575.4607
nathaniel@burrtemkin.com

This statement is based upon information we believe to be correct and is obtained from sources we regard as reliable, but we assume no liability for errors or omissions therein.

www.burrtemkin.com

Burr & Temkin

AUCTION - TRUCKLOAD PROPERTIES

FOR
SALE

502, 548 Bridgers Avenue & 509 U.S. Highway 92
Auburndale, FL

Offices	Main office: 16,000± SF 2nd office: 14,440± SF (2-levels)
Total SF	92,306± SF
Shop Buildings	<ul style="list-style-type: none">• 76,300± SF• 3 Separate shops• 19 Bays total
Site	20.14± acres total <ul style="list-style-type: none">• 1.8± acre drop yard• Concrete & gravel yard
Location Details	<ul style="list-style-type: none">• Located southwest of Orlando• Convenient I-4 access• Highway 92 Frontage



6659 North Tallahassee Road
Crystal River, FL

Site	<ul style="list-style-type: none">• 10.52± Acres• Paved, fenced, & lit
Shop	<ul style="list-style-type: none">• 5,600± SF• 3 Drive-thru bays
Location Details	Excellent N. Suncoast Blvd. access for serving Florida's West Coast

Will McFarlin
12395 Morris Road
Suite 105
Alpharetta, GA 30005
770.410.1900
willm@burrtemkin.com

Nathaniel Weikert
12395 Morris Road
Suite 105
Alpharetta, GA 30005
678.575.4607
nathaniel@burrtemkin.com

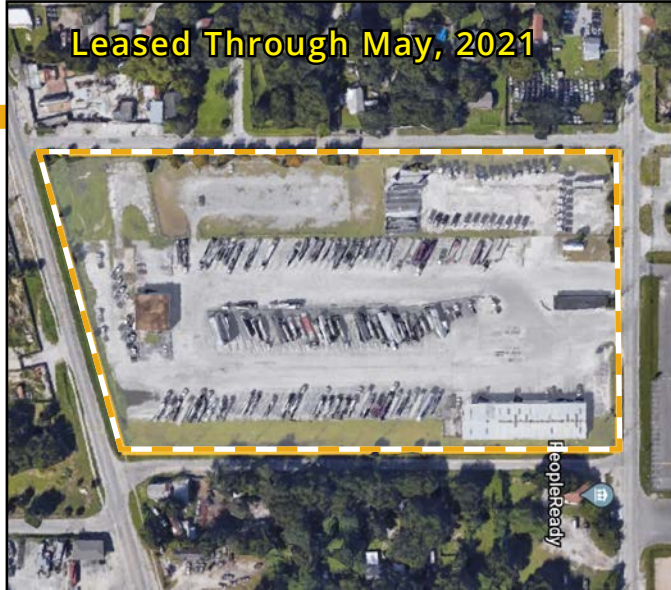
This statement is based upon information we believe to be correct and is obtained from sources we regard as reliable, but we assume no liability for errors or omissions therein.

www.burrtemkin.com

Burr & Temkin

AUCTION - TRUCKLOAD PROPERTIES

FOR
SALE

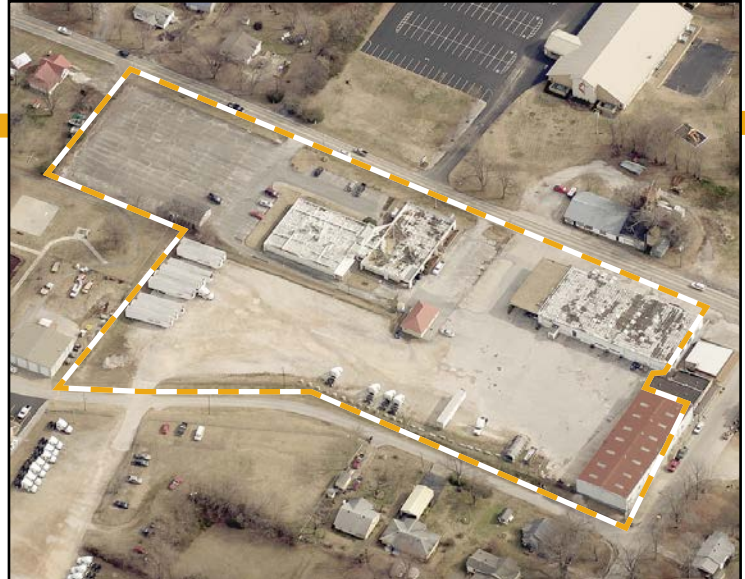


5619 East Columbus Drive
Tampa, FL

Site	<ul style="list-style-type: none">• 11.39± Acres• Paved with extra gravel parking area• Fenced & lit
Shop	<ul style="list-style-type: none">• 12,300± SF• 8 Drive-in bays• 20' Clear
Office	1,980± SF
Location	I-4, US-275, & Selmon Expressway Proximity

201 North Elm Street
Elm Springs, AR

Site	<ul style="list-style-type: none">• 12.1± Acres• Paved, fenced, & lit
Shop	<ul style="list-style-type: none">• 3 Buildings• 16 Shop bays
Office	12,450± SF
Location Details	Northeast of Fayetteville I-49 & Route 412 proximity



Will McFarlin
12395 Morris Road
Suite 105
Alpharetta, GA 30005
770.410.1900
willm@burrtemkin.com

Nathaniel Weikert
12395 Morris Road
Suite 105
Alpharetta, GA 30005
678.575.4607
nathaniel@burrtemkin.com

This statement is based upon information we believe to be correct and is obtained from sources we regard as reliable, but we assume no liability for errors or omissions therein.

www.burrtemkin.com